



- ★ Retirement Community
- ★ Assisted Living
- ★ Rehabilitation Facility
- ★ Memory Care
- ★ Nursing Home



# A **tour** OF BREWSTER PLACE





# BREWSTER PLACE

## Let us help you find your dream home.

Sign up for our Home Finder e-newsletter to receive bi-monthly updates about the available homes at Brewster Place!



EQUAL HOUSING  
OPPORTUNITY

[WWW.BREWSTERLIVING.ORG/HOME-FINDER](http://WWW.BREWSTERLIVING.ORG/HOME-FINDER)

Independent Living | Assisted Living | Memory Support | Long Term Care



# Table of Contents

<b>LIVE LIFE TO THE FULLEST.....</b>	<b>3</b>
Mission; Map of Campus	
<b>INDEPENDENT LIVING.....</b>	<b>5</b>
North & South Terraces; Oak, Maple, Cedar; The Evergreens; Aspen Cottages; Birchwood Cottages; Grand Homes; Cottonwood Villas; Redwood; Catered Living; Penthouse Suites	
<b>AMENITIES &amp; SERVICES.....</b>	<b>26</b>
Brewster Event Center; Main Street Pavillion; Dining Venues	
<b>BREWSTERCONNECT.....</b>	<b>29</b>
Monthly Membership Program	
<b>ASSISTED LIVING.....</b>	<b>30</b>
Monarch; Frontier; Memory Support	
<b>BREWSTER HEALTH CENTER.....</b>	<b>31</b>
Health Center; David Beck Rehabilitation Center, Therapy Services; Respite Care; Meadowlark Home Health at Brewster Place	
<b>INVESTMENT PLANS.....</b>	<b>36</b>
Life Accommodation Plan; Estate Preservation Plan	
<b>RESIDENT TESTIMONIALS.....</b>	<b>37</b>
<b>CONTACT US.....</b>	<b>38</b>

2024





**Our Mission: Providing all of our residents opportunities for an optimal quality of life.**

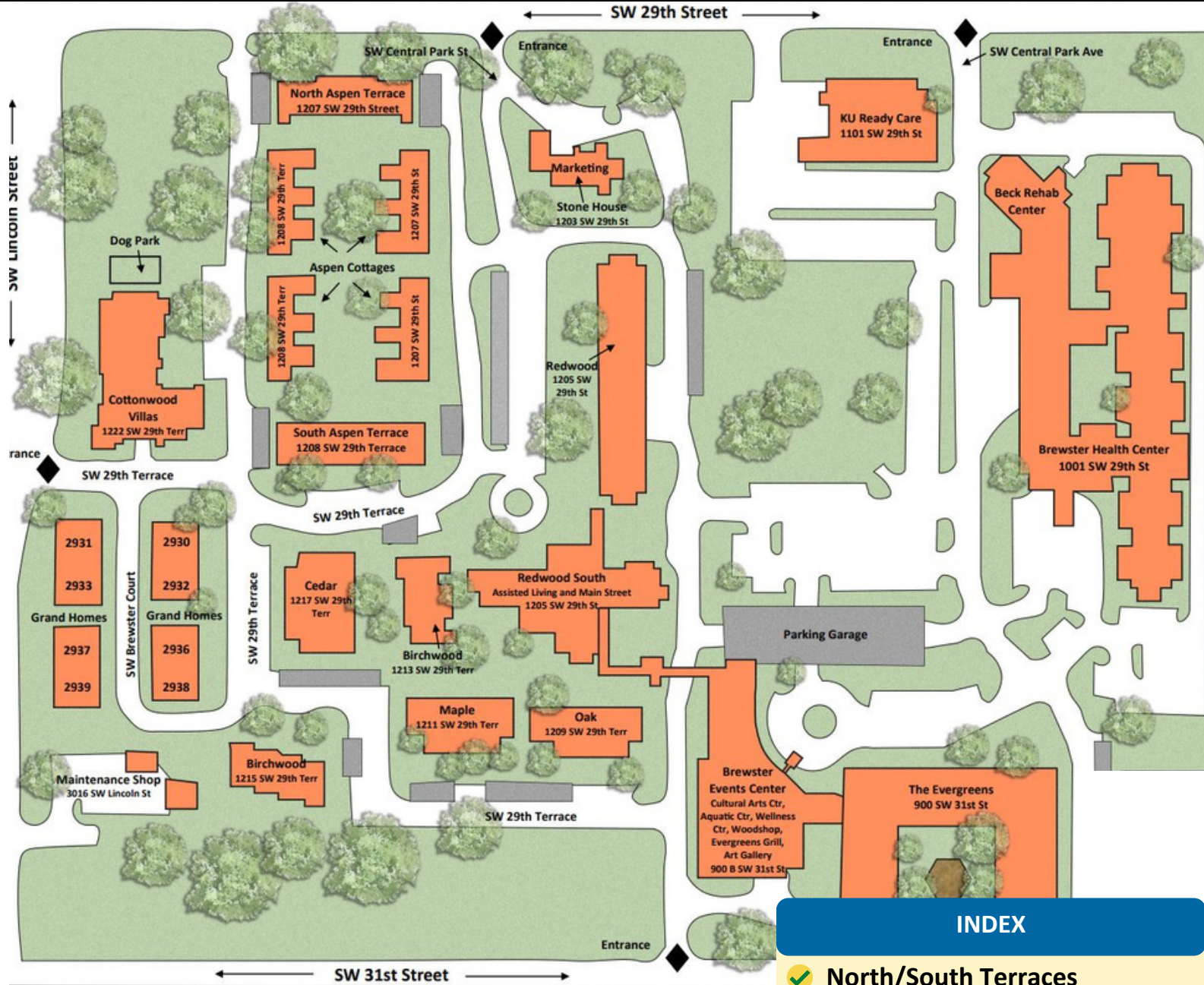
## LIVE **LIFE** TO THE FULLEST

**Come along for a tour and discover the variety of homes, levels of care, and services offered at Brewster Place!**

Brewster Place is an all-encompassing, award-winning Life Plan retirement community located in Topeka, Kansas, which has a distinguished history and reputation for excellence. As a faith-based and mission-driven not-for-profit, Brewster Place offers a wide range of amenities and services tailored to enhance the quality of life for residents.

At Brewster Place, residents have access to all the continuum of care resources to meet their needs while enjoying a diverse array of social and recreational programming in a welcoming environment. Residents are encouraged to participate in enrichment opportunities that include a variety of art and fitness classes, card games, BINGO, pickleball, organized trips, yoga, swimming, music, groups, clubs, and much more.





## INDEX

- ✓ North/South Terraces
- ✓ Oak/Maple/Cedar/
- ✓ Redwood
- ✓ Assisted Living
- ✓ Main Street Pavilion
- ✓ Aspen Cottages
- ✓ Birchwood Cottages
- ✓ Cottonwood Villas
- ✓ Grand Homes
- ✓ The Evergreens
- ✓ Brewster Events Center
- ✓ Brewster Health Center
- ✓ Beck Rehab Center
- ✓ KU Ready Care Walk-in Clinic
- ✓ Stone House

The 35-acre Brewster Place campus offers a wide range of care services catering to residents' various needs and preferences, from maintenance-free Independent Living to Assisted Living, Long-term Care at the Health Center, and even post-acute therapy at the Beck Rehabilitation Center. We also provide a diverse selection of dining options, entertainment, arts, and recreational programming at the Brewster Events Center and at Redwood.

**BREWSTER**  **PLACE**



# Independent Living

## A WIDE RANGE OF **OPTIONS**

Brewster Place offers an array of Independent Living apartments to cater to the diverse needs, preferences, and budgets of our residents. Choose from a variety of locations such as North and South Terraces, Oak, Maple, Cedar, the Evergreens, Aspen and Birchwood cottages, Grand Homes, Cottonwood Villas, and the renovated Redwood high-rise. Each place has unique floor plans, sizes, and price points. Whether you prefer a penthouse suite with a treetop view, or maybe an apartment near the indoor-heated pool, or a cozy cottage with a basement and garage, Brewster Place has something to offer everyone!





# North & South Terraces

Open your front door to enjoy a lovely view of the courtyard and pollinator garden! These apartments are cozy and cost-effective, offering high value at a lower price. Each Terrace level provides 24/7 laundry facilities along with a spacious community room to host family gatherings and entertain guests.

## FEATURES

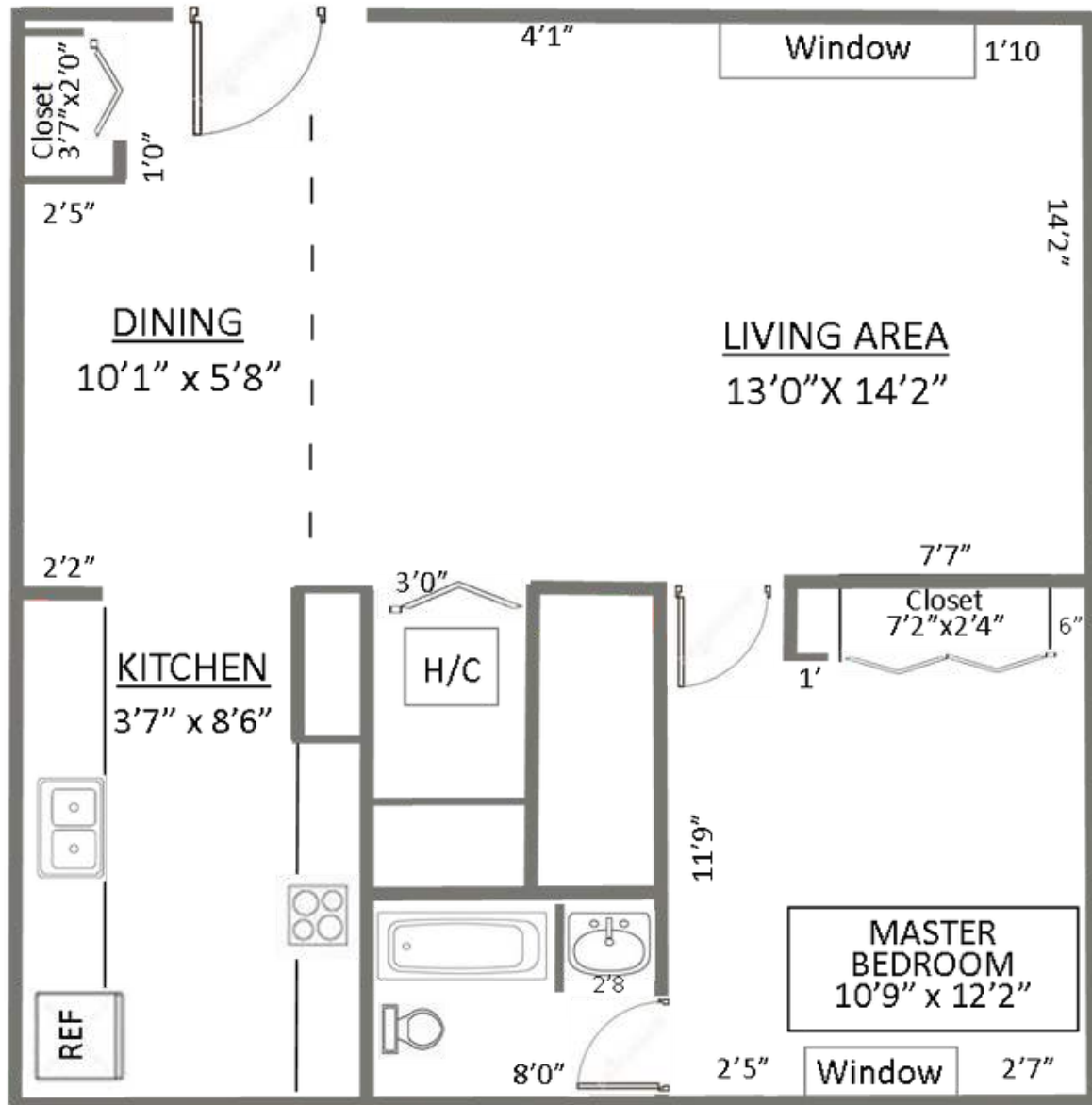
- ✓ Garden Views
- ✓ Economical
- ✓ Full kitchens
- ✓ Storage
- ✓ Covered Patio or Balcony
- ✓ Exterior Entrances
- ✓ On-site Laundry
- ✓ Community Rooms
- ✓ Reserved Covered Parking

Floorplans available in:  
1 Bedrooms, 2 Bedrooms, and  
Super 2 Deluxes  
500 sq. ft. - 1,000 sq. ft.  
Option to Rent



# North & South Terrace

One Bedroom  
Approx. 500 sq. ft.



\*This is one example of the floor plans offered. Drawings are representative; actual floor plans may vary. Pricing is subject to change. See sales team for details.





# OAK, MAPLE, CEDAR

Oak, Maple, and Cedar are known as the "sister" buildings for their excellent locations amidst a green landscape. They feature two-bedroom apartments with 200 square feet of storage. Enjoy elevator access, on-site laundry, and a courtyard view from your balcony- or opt for a cozy outdoor experience with a covered patio.

## FEATURES

- Full kitchen ✓
- Washer/Dryer Hookups ✓
- Storage ✓
- Elevator Access ✓
- Community Areas ✓
- Outdoor Spaces ✓

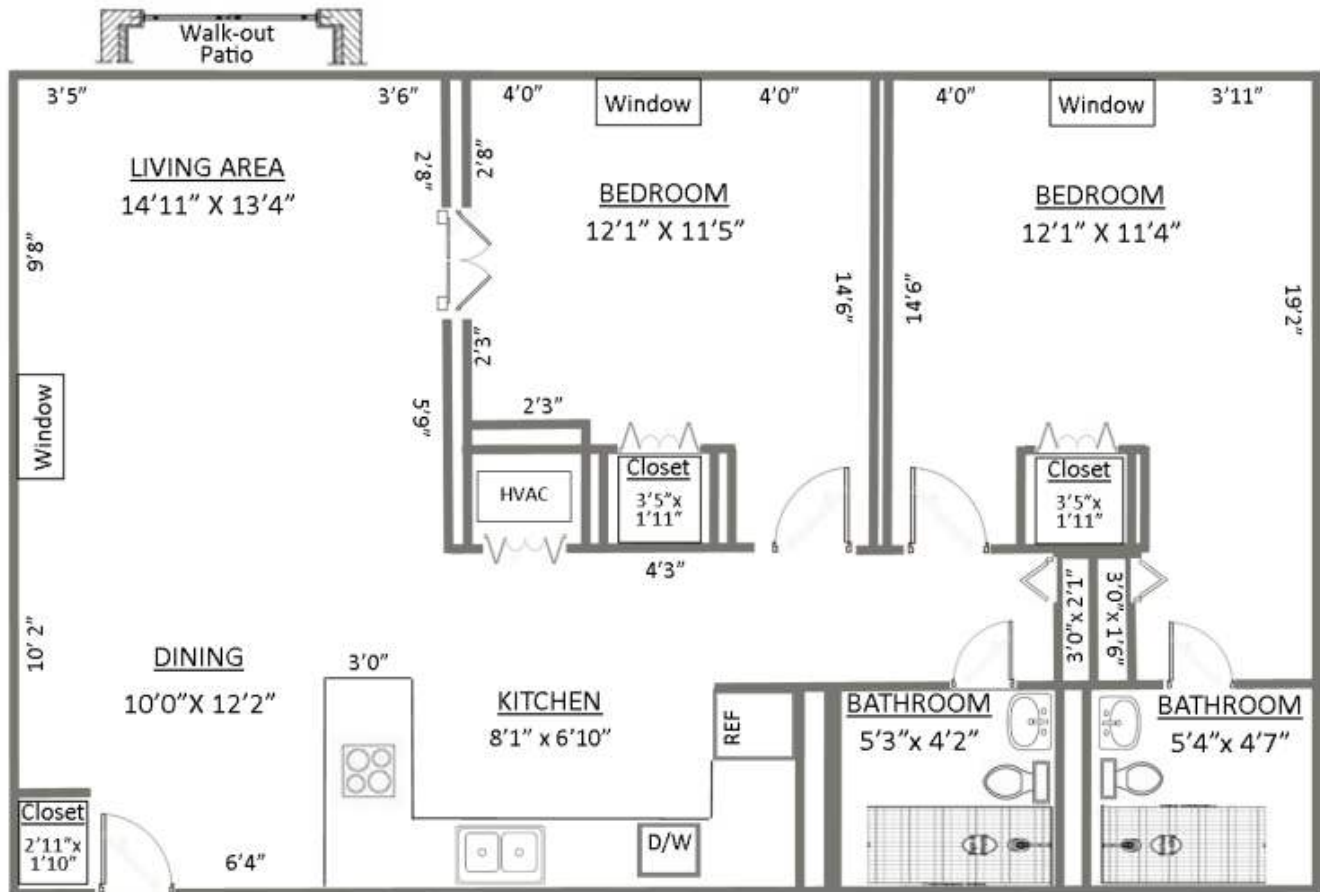
## 2 bedroom/2 bath

1,050 sq. ft.-1,160 sq. ft.



# Oak, Maple, Cedar

Two Bedroom A  
Approx. 1,050 sq. ft.



\*This is one example of the floor plans offered. Drawings are representative; actual floor plans may vary. Pricing is subject to change. See sales team for details.





# The Evergreens

The Evergreens apartments are attached to the Brewster Events Center - which is the heart of the amenities at Brewster Place. These apartments are just a short elevator ride away from the indoor pool, library, Evergreens Grill, pickleball courts, wellness studio, art studio, and more wonderful opportunities for socializing!

## FEATURES

- ✓ Attached to Brewster Events Center
- ✓ Reserved Covered Parking
- ✓ Full Kitchens
- ✓ Stainless Steel Appliances
- ✓ Storage
- ✓ Patio or Balcony
- ✓ Eastern, Northern, Western, Southern (Gazebo) Views

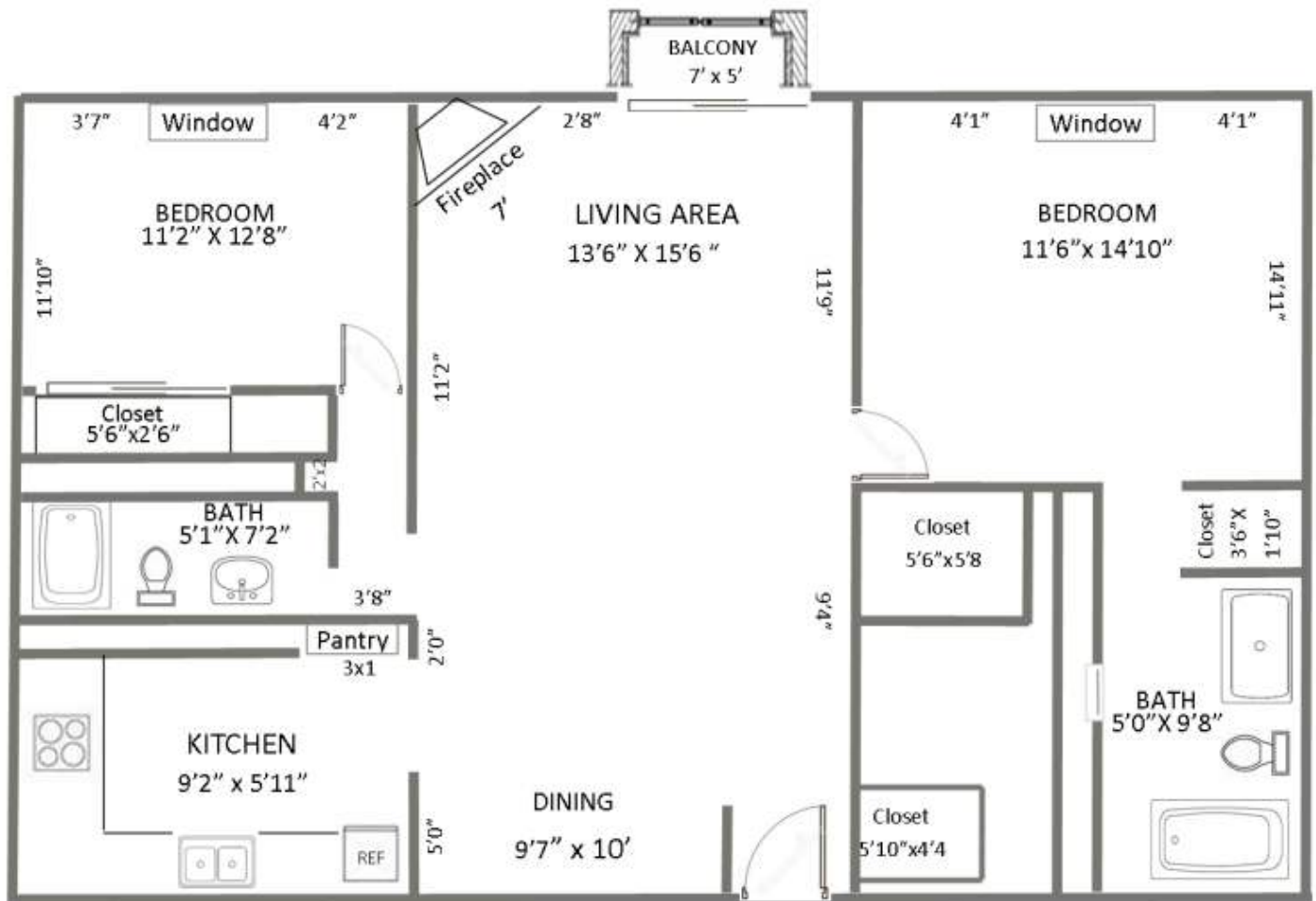
**1 and 2 Bedrooms**

**790 - 1,180 sq. ft.**



# The Evergreens

2 Bedroom Type A  
Approx. 1,180 sq. ft.



\*This is one example of the floor plans offered. Drawings are representative; actual floor plans may vary. Pricing is subject to change. See sales team for details.





# ASPEN COTTAGES

Experience the ultimate level of comfort and luxury in an Aspen cottage! These charming homes offer open floor plans, basements, attached single-car garages, and private patios.

## 2 bedrom/2.5 bath

### 1,430 sq. ft.

## FEATURES

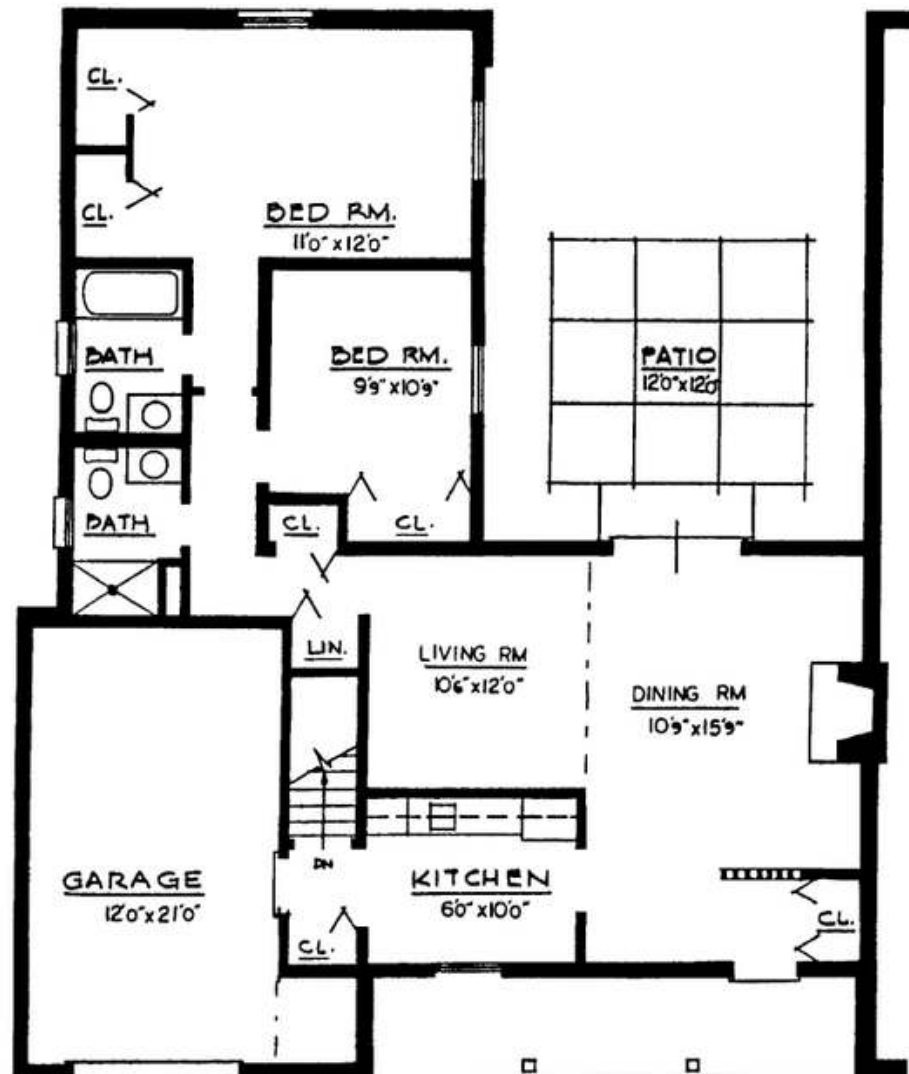
- Full kitchen ✓
- Washer/Dryer ✓
- Basement ✓
- Private Patio ✓
- Storage ✓
- Garage ✓



# Aspen Cottage

**Two Bedroom**  
**Approx. 1,430 sq. ft.**

**Main Level Approx. 980 sq. ft.**  
**Lower Level Approx 450 sq. ft.**



\*This is one example of the floor plans offered. Drawings are representative; actual floor plans may vary. Pricing is subject to change. See sales team for details.





# Birchwood Cottages

The Birchwood Cottages are one of Brewster's most sought-after homes. These spacious cottages offer open floor plans, full kitchens, basements, and enclosed patios on a beautifully landscaped campus. They are located only steps away from covered parking as well as the Main Street Pavilion.

## FEATURES

- ✓ Full kitchen
- ✓ Washer/Dryer
- ✓ Basement
- ✓ Enclosed Patio
- ✓ Covered Parking
- ✓ Prime Location

**2 bedroom/2.5 bath**

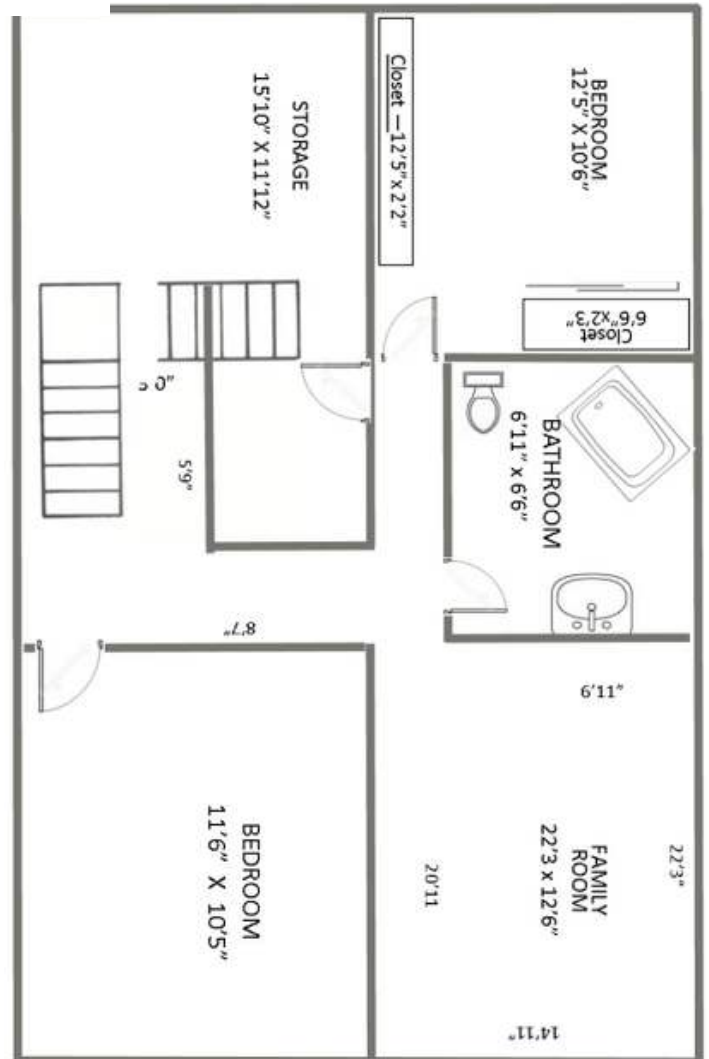
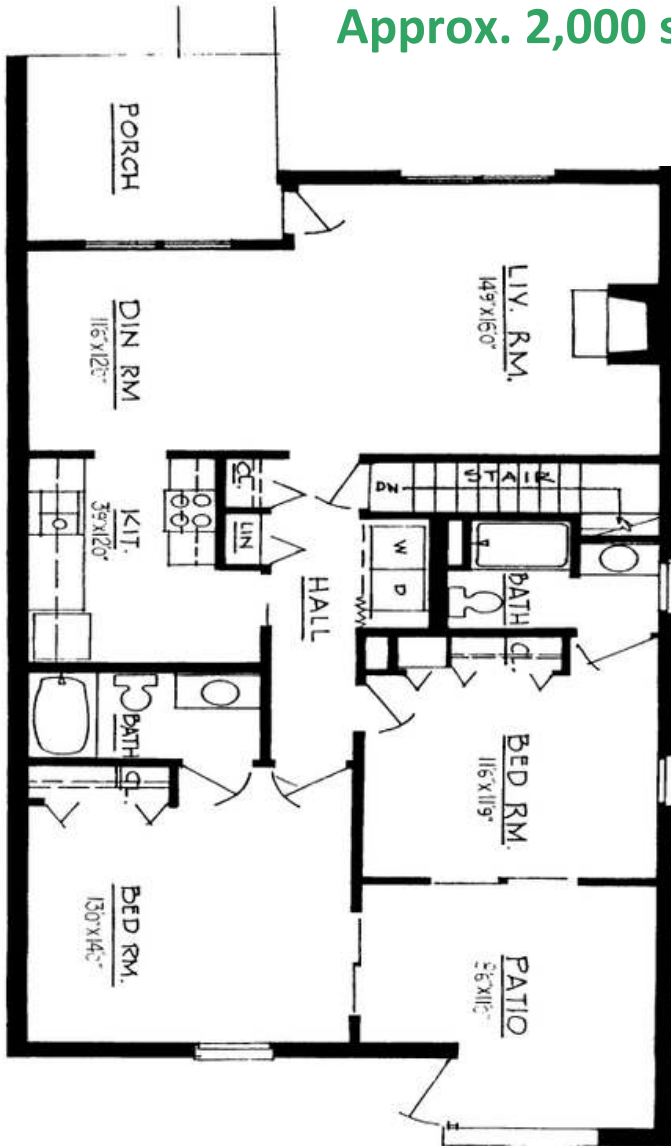
**2,000 sq. ft.**



# Birchwood Cottage

Two Bedroom  
Approx. 2,000 sq. ft.

Main Level Approx. 1,200 sq. ft.  
Lower Level Approx 800 sq. ft.



\*This is one example of the floor plans offered. Drawings are representative; actual floor plans may vary. Pricing is subject to change. See sales team for details.





# Grand Homes

Located on the west side of campus, these exquisite and spacious townhomes are perfect for living large and entertaining, with options ranging from 1,700 to 4,200 square feet with an attached 2-car garage. Enjoy outdoor living spaces with options of patios, decks, and fenced-in yards.

## FEATURES

- ✓ Washer/Dryer
- ✓ Basement
- ✓ Double Car Garage
- ✓ Fenced in Yard or Deck
- ✓ Full Kitchen
- ✓ Walk-in Closets

**2 bedroom / 2 bath**

**1,700 sq. ft. - 4,220 sq. ft.**







# COTTONWOOD VILLAS

Enjoy a worry-free lifestyle in a two-bedroom villa with a den on the west side of campus. These luxurious apartments are equipped with stunning Chef's kitchens and large, wrap-around balconies offering lovely views of the neighborhood. Dog lovers can enjoy the private dog park next door.

## FEATURES

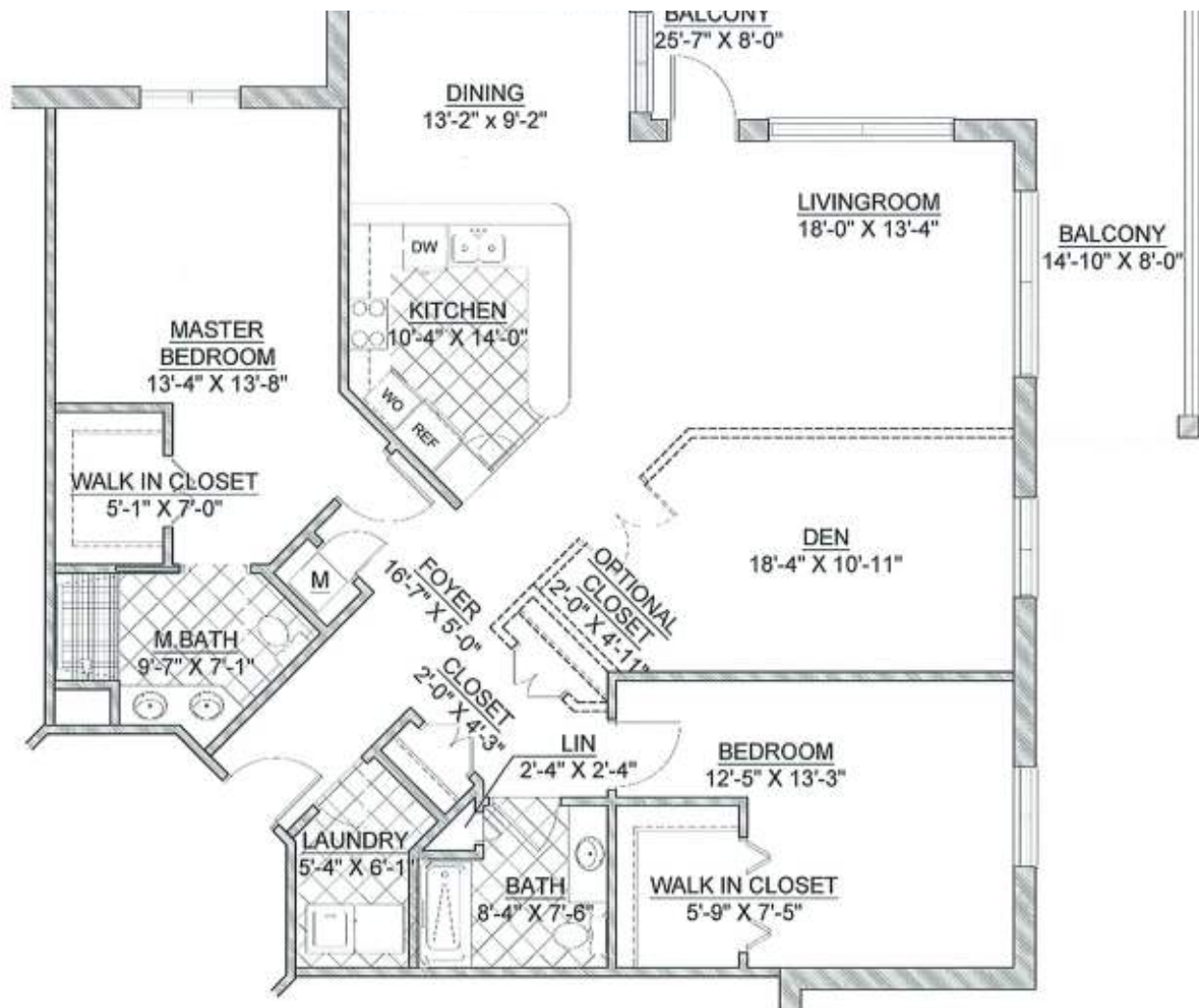
- Washer/Dryer ✓
- Open Kitchen ✓
- Walk-in Closets ✓
- Secured Underbuilding Parking ✓
- Additional Storage ✓
- Balcony ✓

**1, 2, and "Super 2"**  
**Bedrooms Available**  
**Ranging 1,035-2,339 sq. ft.**



# Cottonwood Villa

1 Bedroom + Den  
Corner Balcony  
The Hawthorne #105  
Approx. 1,850 sq. ft.



\*This is one example of the floor plans offered. Drawings are representative; actual floor plans may vary. Pricing is subject to change. See sales team for details.





# Redwood

Live it up at the newly renovated Redwood! This 6 floor high-rise features studios, one-and-two-bedroom apartments, penthouse suites, and catered living services. The recent renovation adds a concierge desk, a new restaurant with an exhibition kitchen, a gaming space, a grand piano, and three new art studios for painting, crafting, and quilting.

Redwood is connected to Redwood South, where Assisted Living is located. The lower level of Redwood features a Chapel, library, and the Main Street Marketplace.

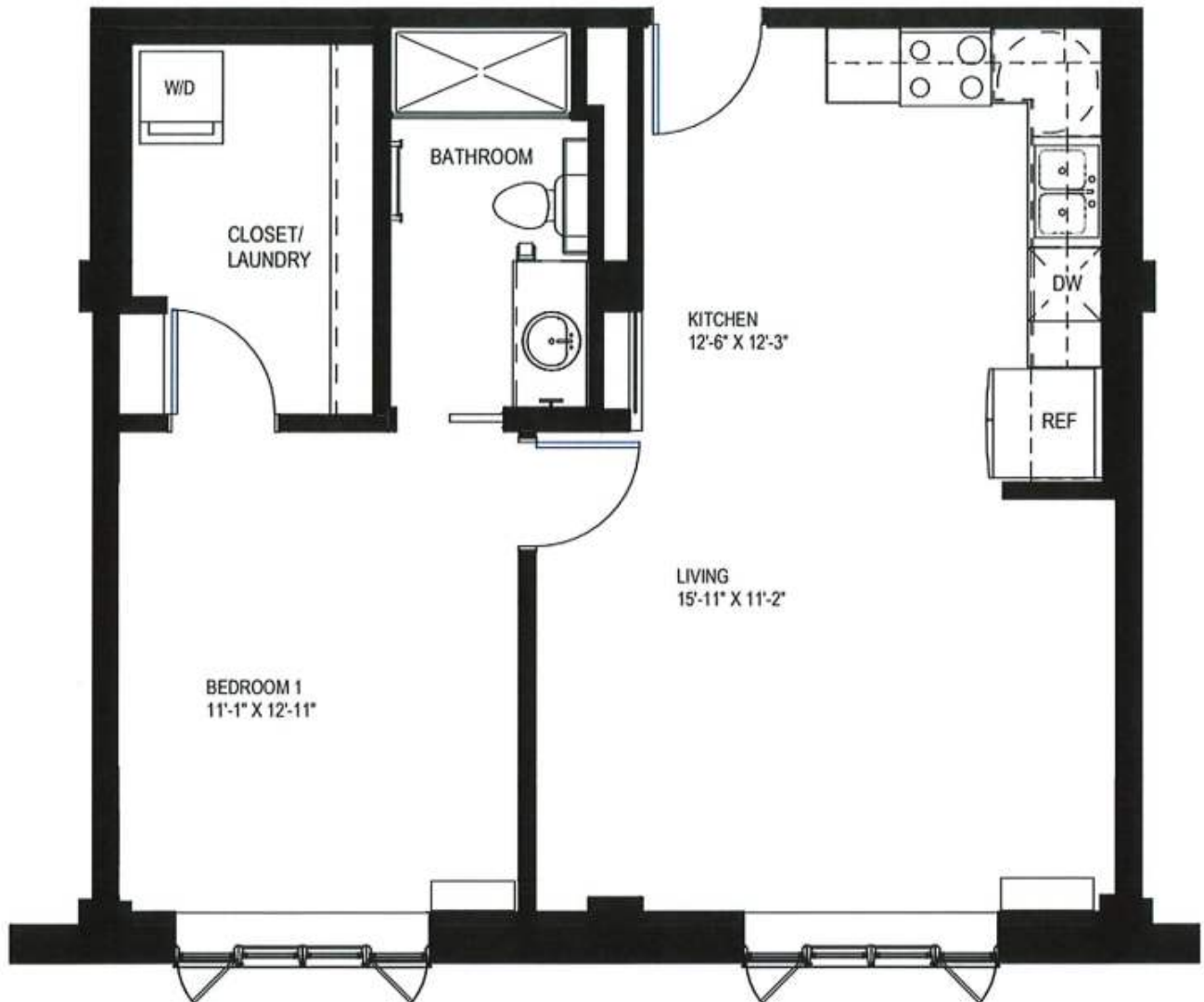
## FEATURES

- ✓ Concierge Desk
- ✓ Views of Campus
- ✓ Balconies
- ✓ En-Suite Laundry
- ✓ Catered Living Services
- ✓ Penthouse Suites
- ✓ Redwood Restaurant
- ✓ New Art Studios
- ✓ New Game Area
- ✓ Grand Piano
- ✓ Resident Library
- ✓ Marketplace Pavilion
- ✓ Connected to Assisted Living



# Redwood Corner Club

**1 Bedroom on Club Level  
Corner Club #101  
Approx. 724 sq. ft.**



\*This is one example of the floor plans offered. Drawings are representative; actual floor plans may vary. Pricing is subject to change. See sales team for details.





# Catered Living

With your lovely apartment home in Redwood, you'll have access to everything you need for an easy and enjoyable retirement, plus the security of knowing personal care and support are available when needed.

Relax and leave the cooking, cleaning, and laundry to us! Catered Living includes all meals every day along with nutritional snacks. Apartments range in size from a 500 sq. ft. studio to a 1,040 sq. ft. two-bedroom apartment home.

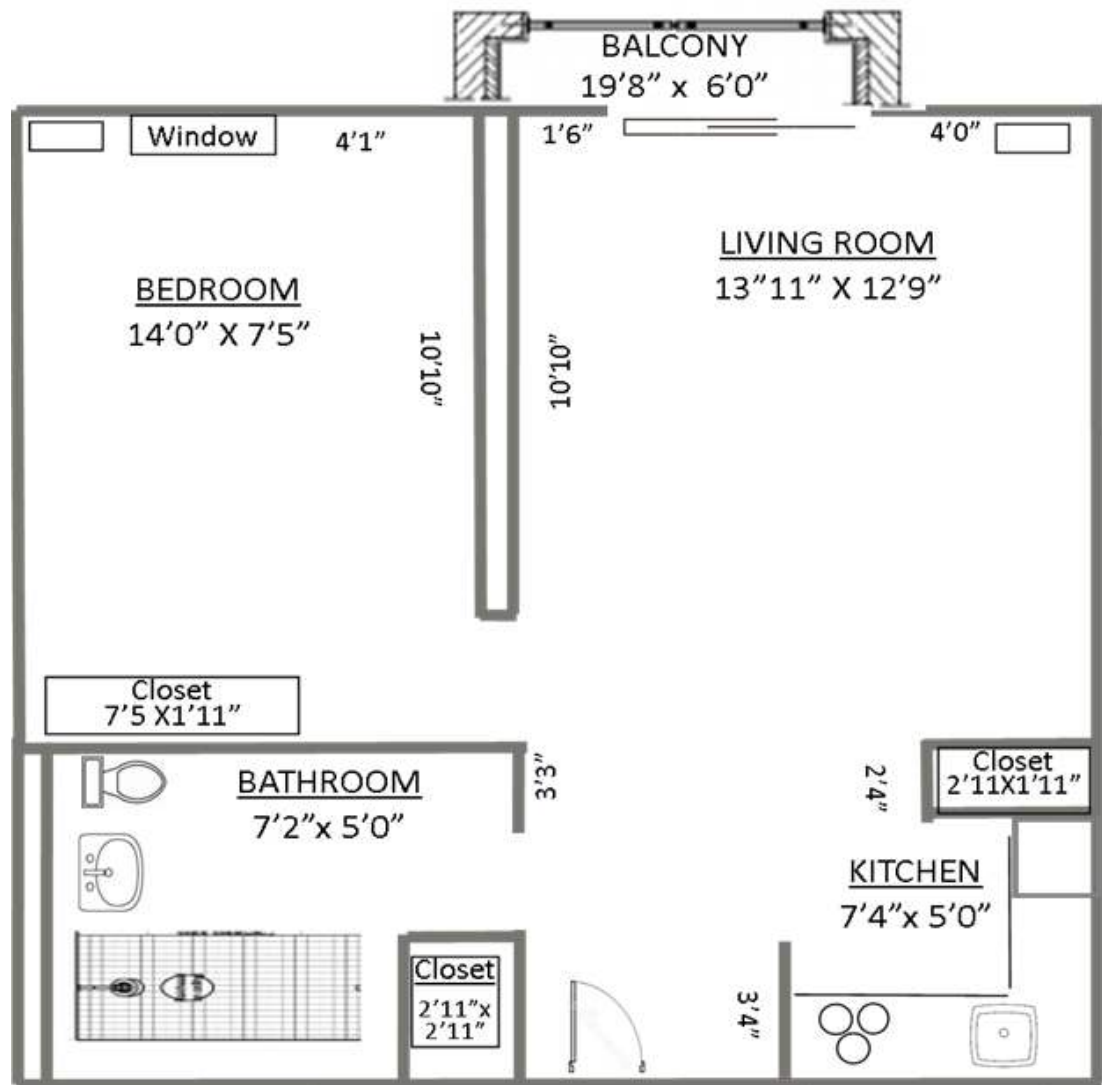
## FEATURES

- ✓ Bi-weekly House Cleaning
- ✓ Weekly Laundry
- ✓ 3 Meals Everyday
- ✓ Tree-top Views
- ✓ Kitchenettes
- ✓ Balconies
- ✓ New Gaming Area
- ✓ Arts & Crafts Studios
- ✓ Resident Library
- ✓ Main Street Marketplace



# Redwood Catered Living

Carlton Studio  
Approx. 500 sq. ft.



\*This is one example of the floor plans offered. Drawings are representative; actual floor plans may vary. Pricing is subject to change. See sales team for details.





# Penthouse Suites

Six spacious two-bedroom, two-bath suites will offer vast views of Topeka's skyline and beyond from the top of the Redwood! These luxury units range in size from just over 1,400 square feet to 1,780 square feet of well-appointed living space, including full kitchens, en-suite laundry and large balconies, all designed to enhance life from six stories high.

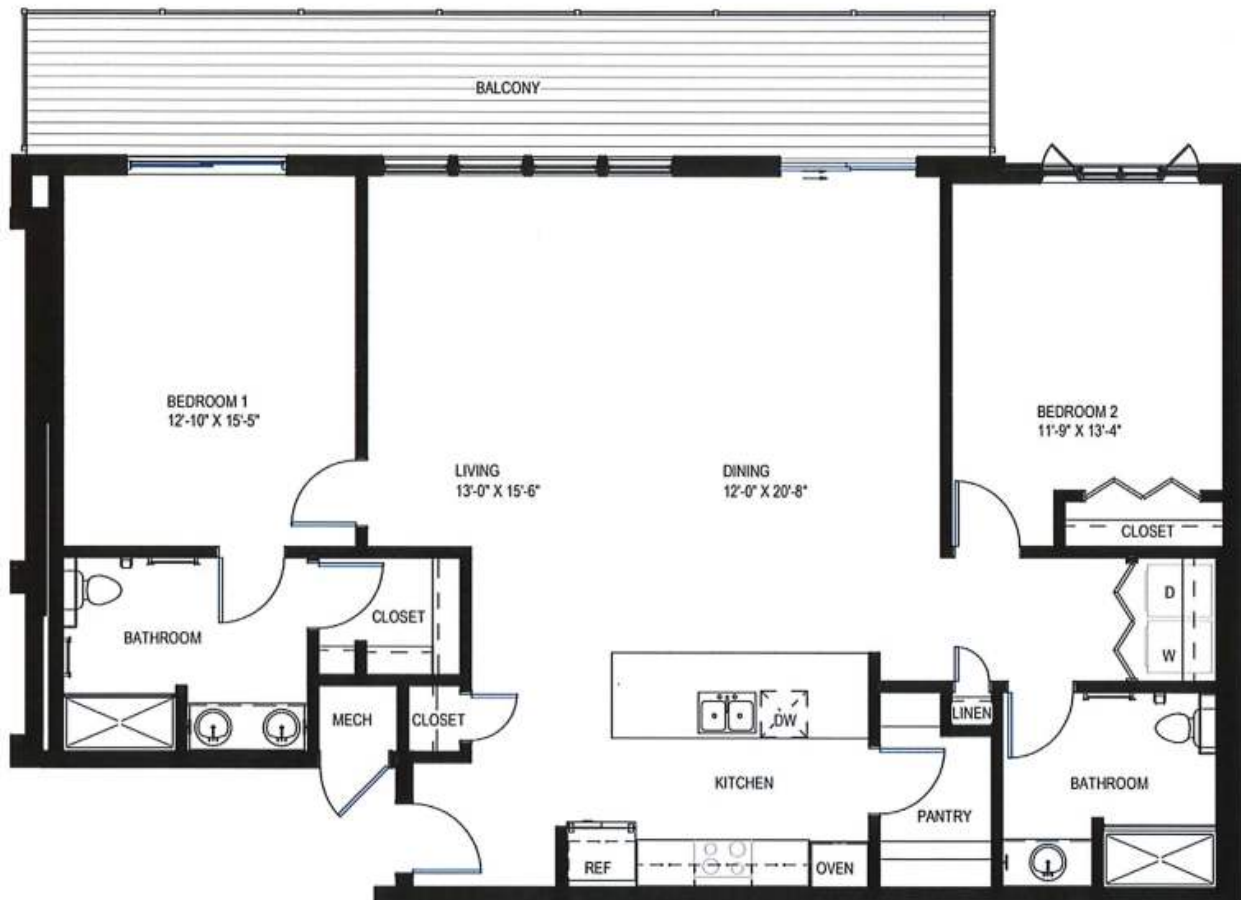
## FEATURES

- ✓ Tree Top Views
- ✓ Large Balconies
- ✓ En-Suite Laundry
- ✓ Quartz Countertops
- ✓ Gaslight Fireplaces
- ✓ Reserved Parking
- ✓ Full Kitchens
- ✓ Walk-in Closets
- ✓ Floor to Ceiling Windows



# Penthouse Suite

2 Bedroom Penthouse  
Northern Lights #6006  
Approx. 1,507 sq. ft.



\*This is one example of the floor plans offered. Drawings are representative; actual floor plans may vary. Pricing is subject to change. See sales team for details.





# Brewster Event Center

As one resident puts it, "If you're bored, it's your fault!" There is *always* something to do at Brewster Place. Residents may enjoy classes promoting good health and well-being, fitness and aerobics, arts and crafts, dancing, yoga, tai chi, quilting, and woodworking.

The Brewster Events Center is a great place to make new friends. Each month unfolds a calendar packed full of opportunities for engagement with recreational programming, colorful arts, events, classes, pickleball, card games, movie shows, and weekly socials.

## FEATURING

- ✓ Indoor Heated Pool
- ✓ Wellness Studio
- ✓ Woodshop
- ✓ Art Studio
- ✓ Evergreens Grill
- ✓ Brewster Bean
- ✓ Full Service Salon and Spa
- ✓ 2 Pickleball Courts
- ✓ Art Gallery Wall
- ✓ Library
- ✓ Venue Space with Stage for
  - Events
  - Entertainment
  - Parties
  - Performances
  - KU Osher Classes
  - Movies

900 SW 29th St. Topeka, Ks 66611



*A happening place to be!*

## MAIN STREET PAVILION

Located in the lower level of Redwood South, the Marketplace at the Main Street Pavilion provides a variety of dining options with a salad bar and a convenience store that offers snack items, yogurt, candy, ice cream, and bottled beverages.

But that's not all! You can also explore the Pavilion to find a chapel, full-service beauty salon, wellness studio, Kaw Valley Bank, and Veterans Honor Hall which connects to the Brewster Events Center.

### FEATURES

- Chapel ✓
- Marketplace Dining ✓
- Full Service Beauty Salon ✓
- Kaw Valley Bank ✓
- Wellness Studio ✓
- Weekly Socials ✓
- Veterans Hall ✓





# Dining Venues

All Independent Living residents receive a meal credit per month to enjoy at any of the dining venues on campus. Menus are created in consultation with a registered dietitian, our dining staff, and resident input. Special attention is given to low salt, low sugar, and gluten-free menu items while providing a wide variety of homemade and healthy menu choices. Holiday meals are served seasonally throughout the year.

BREWSTER  PLACE

EVERGREENS GRILL

REDWOOD RESTAURANT

THE MAIN ST MARKET

BREWSTER BEAN



# BREWSTER *Connect*



## Monthly Membership

BrewsterConnect is a membership program for seniors age 55+ living in the greater Topeka area who would like to experience the amenities and lifestyle at Brewster Place while still living in their homes.

Brewster Connect is a fitness membership for your body, mind, and spirit!

- Innovative wellness programs utilizing Five to Thrive Dimensions of Wellness – Physical, Social, Intellectual, Spiritual and Emotional
- Opportunities for engagement, social and cultural events, and educational seminars
- Fellowship and friends

### BENEFITS

- ✓ Wellness Programs
- ✓ Events
- ✓ Groups & Clubs
- ✓ Classes
- ✓ Fitness Studios
- ✓ Indoor Pool
- ✓ Dining Venues
- ✓ Libraries
- ✓ Socials
- ✓ Day Trips
- ✓ Woodshop
- ✓ Recreational Arts
- ✓ KU Osher Lectures
- ✓ Pickleball
- ✓ & Much More!





# Assisted Living

## QUALITY **CARE** YOU CAN RELY ON

Brewster Place Assisted Living offers a full, satisfying life with quality care for those who need additional help with activities of daily living, such as bathing, dressing, and medication management. The routines of daily life are nurtured and enriched with a wide range of arts, programming, and engagements.

- **Off-campus trips**
- **Exercise Classes**
- **Celebrations**
- **Music**
- **Colorful Arts**

Compassionate, caring staff with specialized dementia training provide encouragement, prompts, and reminders to ensure residents with memory support needs enjoy a full and active lifestyle.



The Monarch neighborhood offers studio and one-bedroom apartments located on the first floor, with access to the Chapel and Market.



Frontier is a secured memory-support neighborhood that offers studio and one-bedroom apartments located on the second floor.

Conveniently located next to Main Street, which includes a Chapel, beauty salon, wellness center, market, and bank.





# Brewster Health Center



The Brewster Health Center is a licensed, Medicare-certified award-winning skilled nursing facility. The center provides a full range of person-centered care options including two secure memory support neighborhoods with private rooms, restorative nursing, rehabilitation and therapy services, adult day services, inpatient services, and respite care.

## NEIGHBORHOODS

- Eagle Ridge
- Sunflower
- Meadowlark
- Rehab

## SKILLED SERVICES

- Alzheimer's and Dementia Care
- Arts & Recreational Programming
- In-house Primary Care Physicians
- Labs
- X-Rays
- 24-Hour Nursing Support
- Discharge Planning
- Services Setup
- In-House Therapy Team
- Restorative Programming





# David Beck Rehab Center

The award-winning David Beck Rehabilitation Center is committed to offering the finest short-term restorative care, and post-acute inpatient rehabilitation services in Topeka. Our team of certified healthcare professionals offers person-centered care to guide and support you throughout your healing journey.



## PRIVATE AND SEMI-PRIVATE ROOMS INCLUDE:

- ✓ Kaizen Care
- ✓ 24 Hour Nursing Staff
- ✓ En Suite Bath
- ✓ Full-size zero entry shower
- ✓ Large windows
- ✓ Flat screen TV
- ✓ Enclosed courtyard
- ✓ Complete dining services
- ✓ On-Site Security

## SKILLED SERVICES AND THERAPY

- Inpatient Therapy
- Aquatic Therapy
- Physical Therapy
- On-site Physician
- Dietician

- Occupational Therapy
- Speech therapy
- Ultrasound Therapy

- Diathermy
- Electrical Stimulation
- High-tech healing tools

1001 SW 29th St, Topeka, KS 66611



# Therapy



Our in-house therapy team provides exceptional healthcare services that include, but are not limited to, Dry Needling, Lymphedema, Aquatics, Driving Program, Aphagia Treatments, and Voice/Speak Out. All specialized services require a physician's order. While we welcome all patients above the age of 18, priority admission is given to Brewster Place residents.

## THERAPY OFFERS

- Inpatient
- Outpatient
- Home Health
- Private Pay

## INPATIENT

- Nursing Care
- Physical Therapy
- Occupational Therapy
- Speech Therapy
- Social Services
- Short-term Stay in Beck Rehab

## OUTPATIENT

- Physical Therapy
- Occupational Therapy
- Speech Therapy
- Driving/Evaluation Program

1001 Sw 29th St, Topeka, KS 66611





# Respite Care

Brewster Place offers respite care for individuals needing support as they transition from a medical facility. Whether recovering from an illness or surgery or giving caregivers some time off, respite care is a wonderful way for guests to experience all the amenities and services during a short-term stay up to a maximum of 60 days.

## STUDIO INCLUDES

- ✓ 24 Hour Assistance
- ✓ Hospital Bed
- ✓ Recliner
- ✓ Basic Cable TV
- ✓ Phone
- ✓ Wireless Internet

### SERVICES INCLUDE

- All Meals Daily with Snacks
- Housekeeping
- Laundry
- Programming

### NURSING SERVICES

- Insulin Administration
- Ostomy Care
- Catheter Care
- Wound Care

### AVAILABLE AT COST

- Transportation to Medical Appointments



# Meadowlark Home Health at Brewster Place

## Serving Campus & Community

Maintain the greatest level of independent living possible in your home by taking advantage of our in-home health services. As part of our commitment to enhancing senior lifestyles, Brewster Place offers Certified Home health services through our partnership with Meadowlark Hills of Manhattan. Your care and personal needs will be addressed in the comfort of your own home. Therapists, nurses, and CNAs are all screened and trained so that you can feel completely safe and secure.

Services are available on a daily, weekly, or monthly basis.

### SKILLED SERVICES

- |  |  |  |
|--|--|--|
| <ul style="list-style-type: none"><li>• Health Assessments</li><li>• Diabetes Management</li><li>• Intravenous Therapy</li><li>• Lab Work</li><li>• Foot/Nail Care</li></ul> | <ul style="list-style-type: none"><li>• Vaccinations</li><li>• Wound Care</li><li>• Hygienic Care</li><li>• Pain Management</li><li>• Medication Assistance</li><li>• Incontinence and Ostomy care</li></ul> | <ul style="list-style-type: none"><li>• Physical Therapy</li><li>• Occupational Therapy</li><li>• Speech Therapy</li><li>• Anticoagulation Therapy</li></ul> |
|--|--|--|





# INVEST

## IN YOUR FUTURE



Brewster Place residents pay an entrance fee and a monthly service fee to support ongoing operations, maintenance, and upgrades. Convenient and accommodating financial plans are offered, requiring a one-time investment with 25% due at signing and the balance upon occupancy. The investment secures future healthcare needs and guarantees discounted access to higher-level care services.

### LIFE ACCOMMODATION PLAN

Twenty-five percent of the LAP investment is non-refundable with an amortized balance. If you vacate your Brewster Place home to reside in Assisted Living or Brewster Health Center during the amortized period, the balance is used for care. Any balance is refunded to your estate if your life's journey ends during the amortized period.

### ESTATE PRESERVATION PLAN

The EPP program and LAP have a similar non-refundable 25% investment, but the EPP program's balance is non-amortized and can be refunded to your estate. It can also be used towards your care if you move to Assisted Living or Brewster Health Center.

### INCLUDED IN THE MONTHLY FEE

**Electricity, Water, Sewer & Trash Removal, Basic Cable TV, WIFI, On-Campus Transportation, Bi-Weekly Housekeeping, 24-Hour Security, Emergency Life Alert Pendant, Priority Use of Health Services, Social Work Services, Chaplain Services, Landscaping, Maintenance, Snow Removal, Monthly meal credit to use at any 4 dining venues, access to all of the amenities on campus. These amenities include the Cultural Art Center, Indoor heated saltwater pool, Pickleball courts, Woodshop, Art studios, Libraries, Wellness and Exercise centers, Chapel, Salon & Spa services, Game rooms, Osher Learning program, Weekly trips, Groups, Clubs, & more!**



**"This is the best, most caring address on earth. This is definitely a community of caring and building relationships. Awesome!"**

**- J.S., Resident**

**"It has often occurred to me that living at Brewster Place is much like living on a cruise ship! There are several places to eat. There are frequent entertainment events. There are bus trips to points of interest. You get your 'cabin' cleaned regularly by the 'crew.' It takes a while to learn where everything is on the 'ship.' There is no responsibility. The other travelers are friendly and helpful.**

**Enjoy your cruise!"**

**- D.M., Resident**

**"I have to say I drug my feet with the decision to leave our home and come to Brewster. But now I'm so very thankful for the opportunity, for many reasons. It's a GREAT place to be."**

**– A.W., Resident**





# BREWSTER PLACE

**FOR MORE INFORMATION OR TO SCHEDULE  
A VISIT, CONTACT OUR TEAM:**

**785-274-3351**

[Marketing@brewsterliving.org](mailto:Marketing@brewsterliving.org)

[Brewsterliving.org](http://Brewsterliving.org)

1205 SW 29th St.  
Topeka, Kansas 66614



**Find us on Facebook!**

[www.facebook.com/BrewsterPlace.org](http://www.facebook.com/BrewsterPlace.org)







# BREWSTER PLACE

**Come along and embark upon a journey through Brewster Place with these pages as your tour guide! Discover the variety of homes and floorplans, services, and levels of care that we offer on our 35+ acre campus.**

